



# **ZEWNĘTRZNA EWALUACJA PROJEKTU FRAMES**



Kto?

FRAMES  
Projekt programu Erasmus+  
2021 - 2023

<https://frames-project.eu/about/why-frames/>





1. ... jak zorganizować wymianę wirtualną.
2. ... jak przekazać tę wiedzę innym.
3. ... jakie ważne jest wsparcie instytucjonalne oraz akredytacja i jak je uzyskać.
4. ... jak dobrze oceniać i na czym polega konstruktywna informacja zwrotna.

# Kto?



## Partners



## Associate partners

- Anna Lindh Foundation
- Erasmus Students Network
- Association of Public Universities of Catalonia (ACUP)
- Limerick Doras

Kto?



ANNA TURULA

profesor Uniwersytetu Pedagogicznego im. KEN w Krakowie, kierownik Katedry Cyfrowej Edukacji Językowej; doświadczony metodyk i praktyk e-learningu; pasjonatka i propagatorka innowacyjnych rozwiązań w dydaktyce, również z wykorzystaniem nowych technologii; autorka kilkudziesięciu kursów zdalnych i hybrydowych; opiekun kilkunastu uniwersyteckich wymian wirtualnych.

# Co się działo w projekcie

We are grateful to the many educators, experts, VE practitioners and everyone who has contributed to our activities and enriched our notion of Virtual Exchange along the year. Thank you to Anna Turula, who keeps an external eye on the quality of our products, providing us with insightful reviews and recommendations to constantly improve our activities.



**Bart van der Velden**  
Sharing Perspectives Foundation

Bart van der Velden is a Senior Research Officer for the Sharing Perspectives Foundation. His research has focussed on the impact of Virtual Exchange on participants, with an emphasis on transversal skills acquisition, and the development on intercultural competencies. He has published extensively on the field of Virtual Exchange.



**Marta Giralt**  
University of Limerick

Marta Giralt is a Lecturer in Applied Linguistics and Spanish at the School of Modern Languages and Applied Linguistics, University of Limerick, Ireland. She teaches International



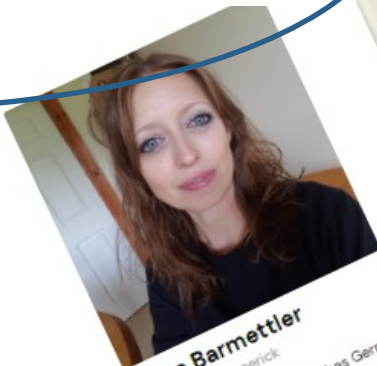
**Ana Beave**  
UNICollabor

Ana P



**arello**

each Officer and Collaboration. expert t Evaluator n for



**Anita Barmettler**  
University of Limerick

PhD, teaches German at the University of Limerick



**Alicia Betts**  
Universitat de Girona

Alicia Betts leads international strategic projects at the Universitat de Girona (Spain), mainly focusing on university strategic partnerships, community engagement and virtual exchange initiatives.



**Anna Turula**  
Pedagogical University of Krakow

Professor Anna Turula is an experienced CALL / EFL teacher and teacher trainer. She is currently based at the Pedagogical University in Krakow, Poland, where she is Head of the Technology Enhanced Language Education (TELE) Department. Her research interests include: new technologies in language learning and teacher training; Online Intercultural Exchanges in language learning and teacher training; cognitive and affective factors in CALL; e-classroom dynamics. She is the proponent and organiser of the CALL conference (2013, 2014, 2015) in Krakow and Krakow) and series of studies in learning.



## Co się działo w projekcie

The toolkit has been externally reviewed by Professor Anna Turula, Head of the Technology Enhanced Language Education Department at the Pedagogical University of Krakow, who said:

“The Toolkit ... has every chance of serving the purpose it was designed for and to live up to the expectations of both the project authors and prospective users. [T]he Toolkit is a good, effective means of devising ways for integration and accreditation of virtual exchange in the institution of the user.”



*Now accessible:*

### Toolkit for Integrating Virtual Exchange in Higher Education

**FRAMES**  
FRAMES  
FRAMES

Providing excellence through  
Accredited Modules for  
European Sustainable Higher  
Education Institutions

EU funded by the  
European Union  
www.frames.eu

# Credits

*Special thanks to all the people who made and released these awesome resources for free.*

- Presentation template by [SlidesCarnival](#)
- Photographs by [Unsplash](#)
- Learn more about slidedocs at [duarte.com/slidedocs](https://duarte.com/slidedocs)